



# NDUFS1 Polyclonal Antibody

<b>Catalog No</b>	YP-Ab-02707
<b>Isotype</b>	IgG
<b>Reactivity</b>	Human;Mouse;Rat
<b>Applications</b>	WB;IHC;IF;ELISA
<b>Gene Name</b>	NDUFS1
<b>Protein Name</b>	NADH-ubiquinone oxidoreductase 75 kDa subunit mitochondrial
<b>Immunogen</b>	The antiserum was produced against synthesized peptide derived from human NDUFS1. AA range:620-669
<b>Specificity</b>	NDUFS1 Polyclonal Antibody detects endogenous levels of NDUFS1 protein.
<b>Formulation</b>	Liquid in PBS containing 50% glycerol, 0.5% BSA and 0.02% sodium azide.
<b>Source</b>	Polyclonal, Rabbit,IgG
<b>Purification</b>	The antibody was affinity-purified from rabbit antiserum by affinity-chromatography using epitope-specific immunogen.
<b>Dilution</b>	WB: 1/500 - 1/2000. IHC: 1/100 - 1/300. ELISA: 1/40000.. IF 1:50-200
<b>Concentration</b>	1 mg/ml
<b>Purity</b>	≥90%
<b>Storage Stability</b>	-20°C/1 year
<b>Synonyms</b>	NDUFS1; NADH-ubiquinone oxidoreductase 75 kDa subunit; mitochondrial; Complex I-75kD; CI-75kD
<b>Observed Band</b>	80kD
<b>Cell Pathway</b>	Mitochondrion inner membrane ; Peripheral membrane protein ; Matrix side .
<b>Tissue Specificity</b>	Brain,Cajal-Retzius cell,Colon,Fetal brain cortex,Liver,
<b>Function</b>	catalytic activity:NADH + acceptor = NAD(+) + reduced acceptor.,catalytic activity:NADH + ubiquinone = NAD(+) + ubiquinol.,cofactor: Binds 1 2Fe-2S cluster per subunit.,cofactor: Binds 2 4Fe-4S clusters per subunit.,disease: Defects in NDUFS1 are a cause of complex I mitochondrial respiratory chain deficiency [MIM:252010]. Complex I (NADH-ubiquinone oxidoreductase), the largest complex of the mitochondrial respiratory chain, contains more than 40 subunits. It is embedded in the inner mitochondrial membrane and is partly protruding in the matrix. Complex I deficiency is the most common cause of mitochondrial disorders. It represents largely one-third of all cases of respiratory chain deficiency and is responsible for a variety of clinical symptoms, ranging from neurological disorders to cardiomyopathy, liver failure, and myopathy.,function: Core subunit of the mitochondrial membrane respirato

**Background**

The protein encoded by this gene belongs to the complex I 75 kDa subunit family. Mammalian complex I is composed of 45 different subunits. It locates at the mitochondrial inner membrane. This protein has NADH dehydrogenase activity and oxidoreductase activity. It transfers electrons from NADH to the respiratory chain. The immediate electron acceptor for the enzyme is believed to be ubiquinone. This protein is the largest subunit of complex I and it is a component of the iron-sulfur (IP) fragment of the enzyme. It may form part of the active site crevice where NADH is oxidized. Mutations in this gene are associated with complex I deficiency. Several transcript variants encoding different isoforms have been found for this gene. [provided by RefSeq, Jan 2011],

**matters needing attention**

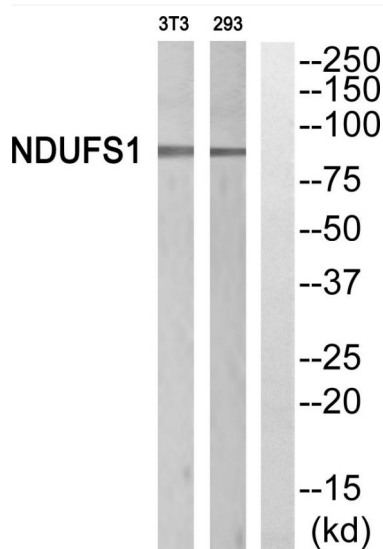
Avoid repeated freezing and thawing!

**Usage suggestions**

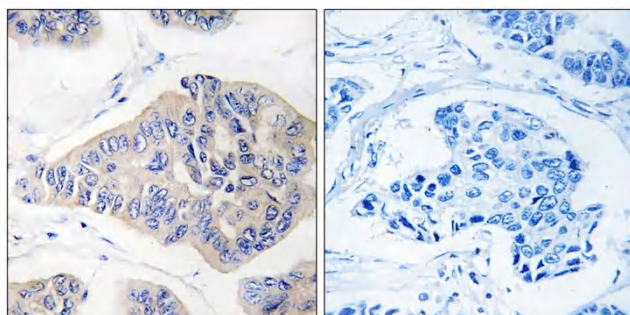
This product can be used in immunological reaction related experiments. For more information, please consult technical personnel.



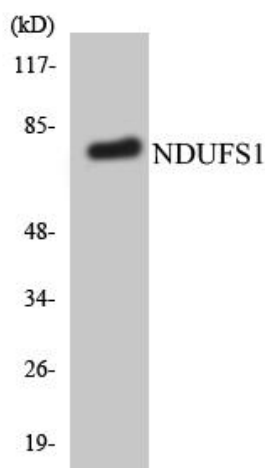
## Products Images



Western blot analysis of NDUFS1 Antibody. The lane on the right is blocked with the NDUFS1 peptide.



Immunohistochemistry analysis of paraffin-embedded human breast carcinoma, using NDUFS1 Antibody. The lane on the right is blocked with the NDUFS1 peptide.



Western blot analysis of the lysates from HepG2 cells using NDUFS1 antibody.